

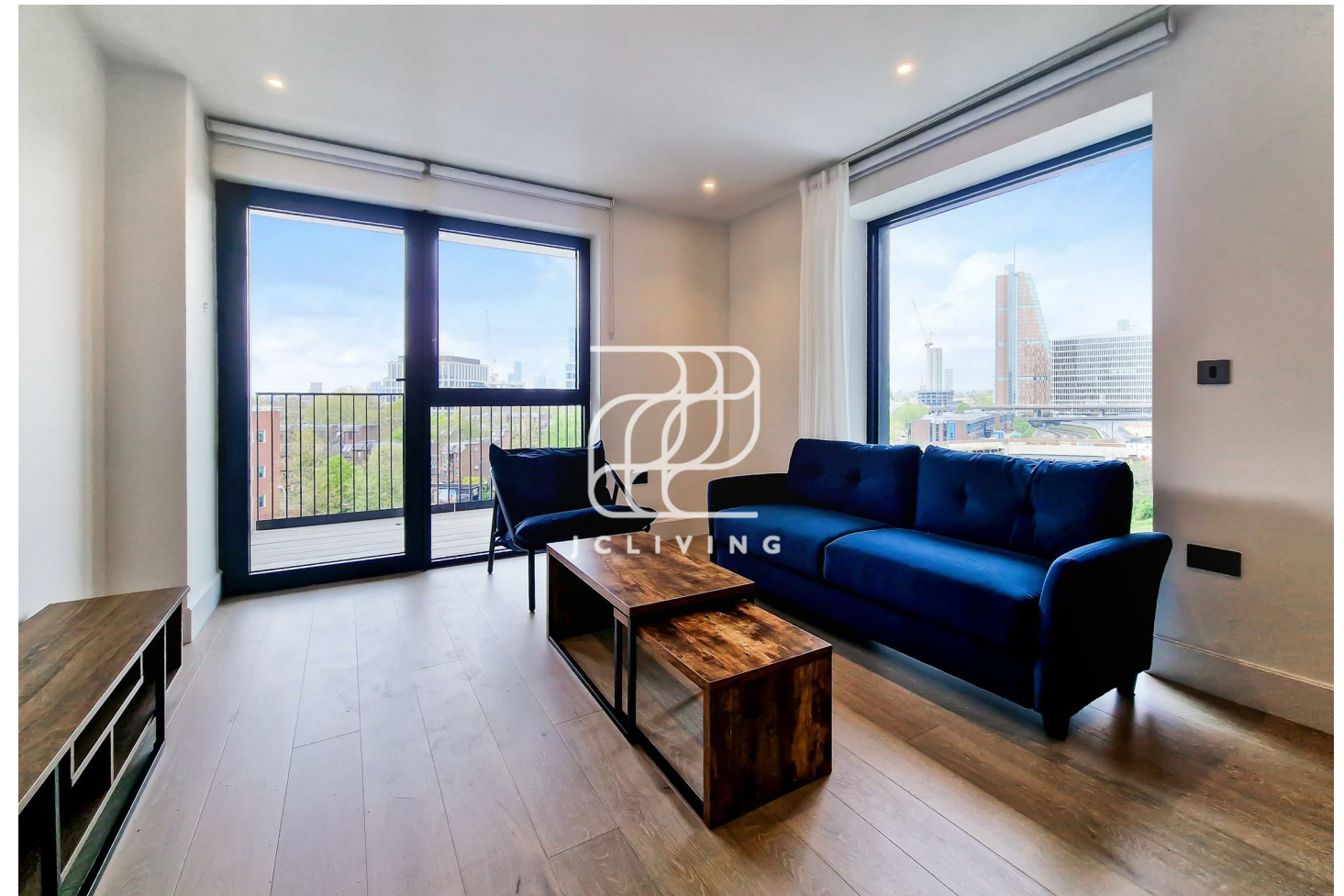
### Directions

### Viewings

Viewings by arrangement only. Call 02033696888 to make an appointment.

### EPC Rating

Energy Efficiency Rating		
	Current	Potential
Very energy efficient - lower running costs		
(92 plus) <b>A</b>		
(81-91) <b>B</b>		
(69-80) <b>C</b>		
(55-68) <b>D</b>		
(39-54) <b>E</b>		
(21-38) <b>F</b>		
(1-20) <b>G</b>		
Not energy efficient - higher running costs		
<b>England &amp; Wales</b>	EU Directive 2002/91/EC	



Flat 110, Westmont Apartments Fountain Park Way, London, W12 7SN

£715 Per Week

# Westmont Apartments Fountain Park Way, London

W/127CN

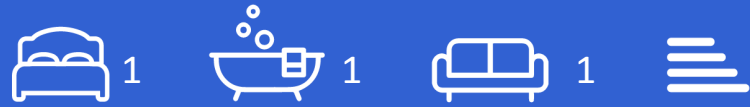
\*\*\* Please quote reference JC25031674 when contacting the office \*\*\*

Nestled in the vibrant area of White City, this exquisite one-bedroom apartment offers a perfect blend of modern living and luxurious amenities. Spanning an impressive 598 square feet, the property features a spacious reception room that invites natural light, creating a warm and welcoming atmosphere.

Residents of this remarkable development enjoy exclusive access to a stunning rooftop club, complete with a bar and a Mediterranean-inspired beach, outdoor pool, and lounge area, perfect for relaxation and socialising. The apartment is ideally located next to the renowned Westfield London shopping centre, providing an array of shopping, dining, and entertainment options right at your doorstep.

In addition to the rooftop club, the property boasts a wealth of residents' facilities, including a state-of-the-art gym, sun terrace, cinema, and various entertainment rooms. The 24-hour concierge service ensures that all your needs are met, while the beautifully landscaped eight acres of gardens offer a serene escape from the bustling city life.

With two nearby underground stations, residents benefit from excellent transport links to central London, making this apartment an ideal choice for professionals and city dwellers alike. This property not only promises a comfortable living space but also a vibrant lifestyle in one of London's most sought-after locations.



Council Tax Band: New Build

